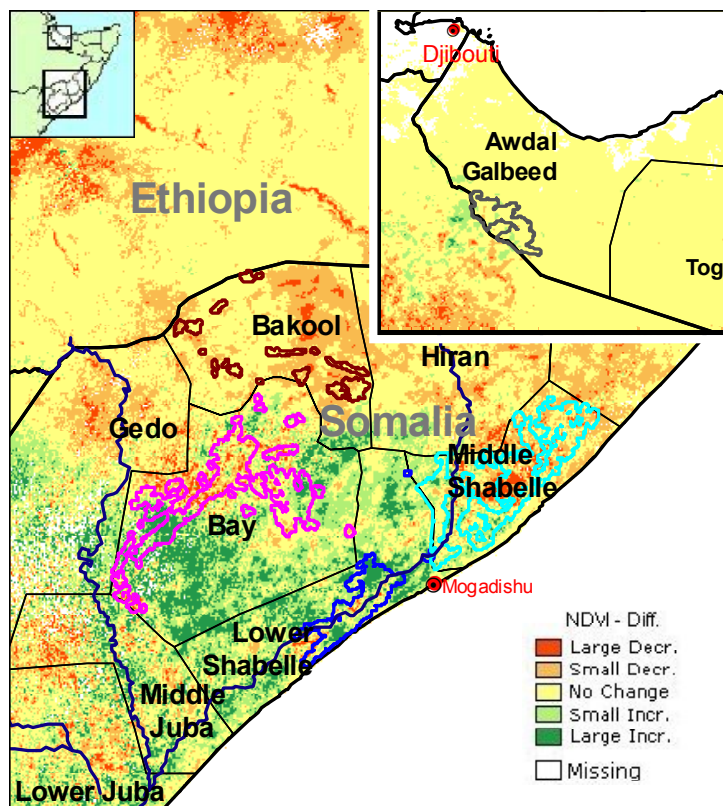
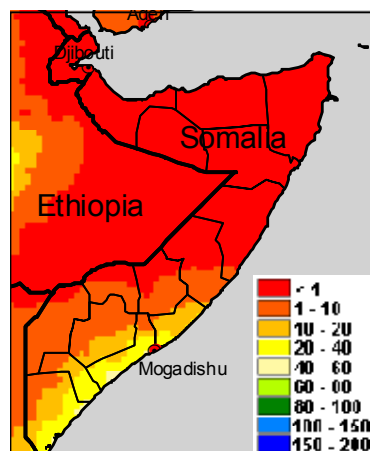


### Agricultural areas



Normalized Difference Vegetation Index (NDVI)  
Absolute difference w.r.t. previous year (Act. - Prev.)  
Period: July 2004 Dekad: I



10-day cumulated rainfall  
Period: July 2004 Dekad: I  
Data derived from ECMWF model  
Produced by METEOCONSULT

### Highlights

#### Rainfall

The rainfall shown by the ECMWF model for the southern coastal areas of the country for this dekad is above the last 4 years average, while the situation in the northern pastoral areas remains dry.

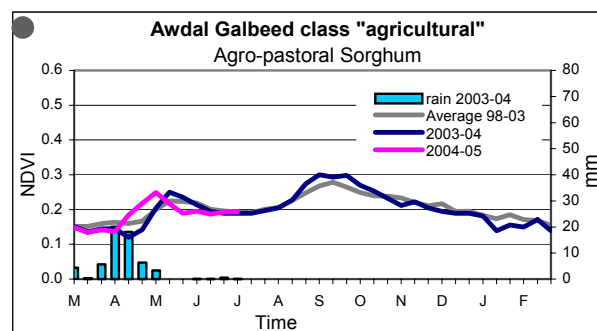
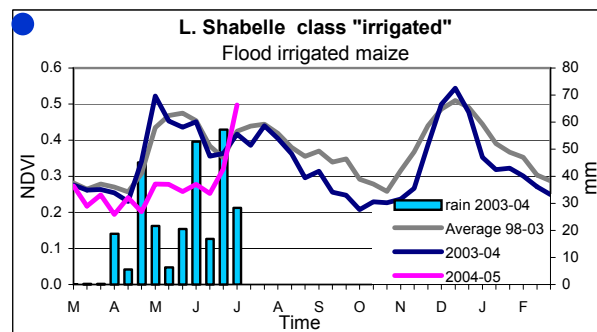
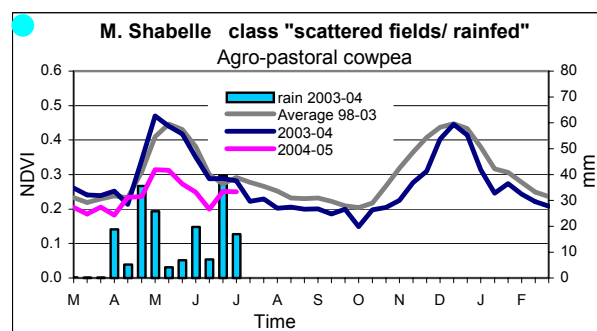
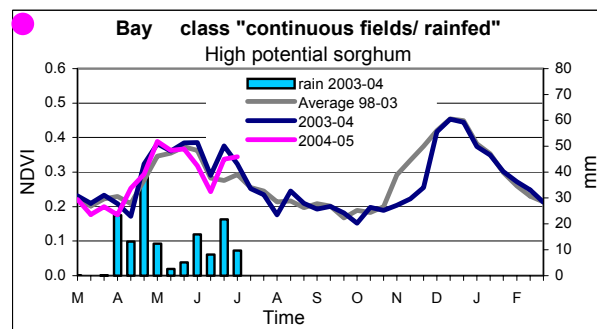
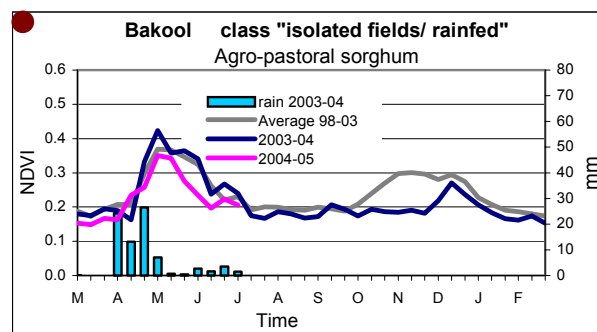
#### Crops

With the exception of Bay, the effects of short and insufficient *Gu* rains are clearly visible. The rainfall of this dekad comes fairly late for crops in this *Gu* season. Based on VGT NDVI and agricultural statistics obtained by FSAU, a *Gu* production forecast for Bay and Lower Shabelle was made as follows:

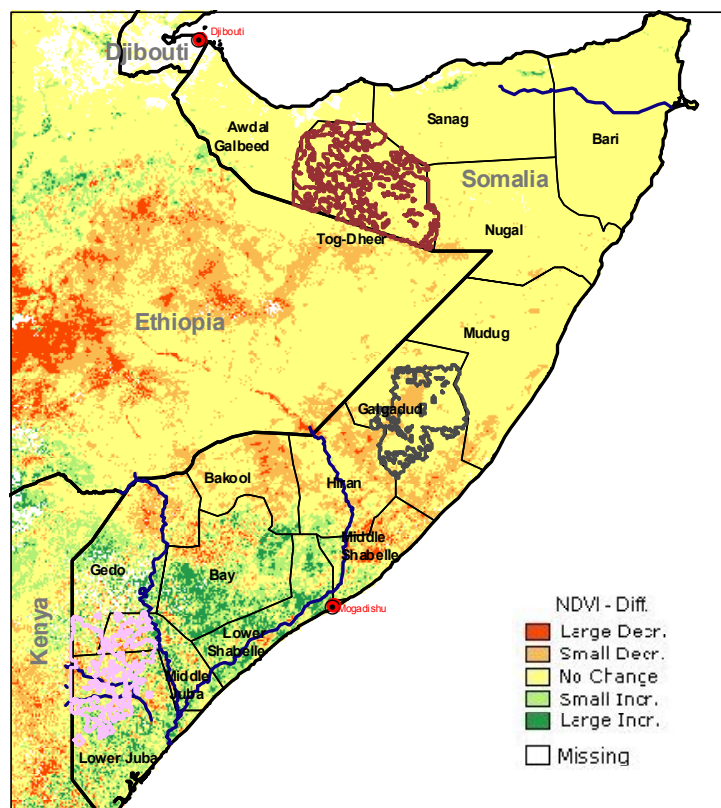
Bay (sorghum):  
41060 MT +/- 17607 MT

Lower Shabelle (maize):  
49905 MT +/- 7845 MT

Please refer to the attached technical note to see how these forecasts were obtained.



## Pastoral areas



**Normalized Difference Vegetation Index (NDVI)**  
Absolute difference w.r.t. previous year (Act. – Prev.)  
Period: July 2004 Dekad: I

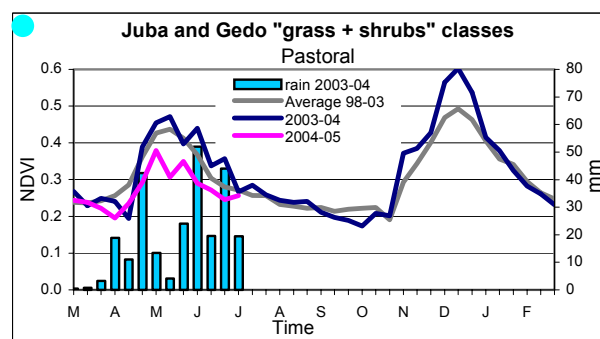
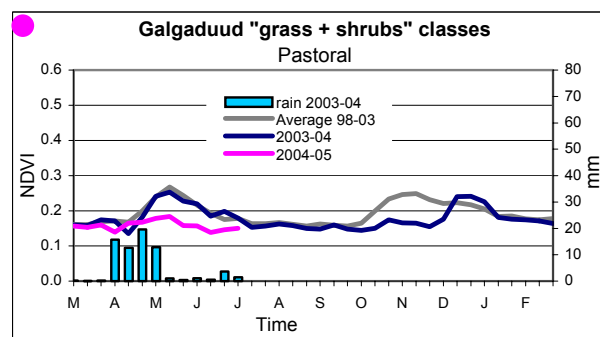
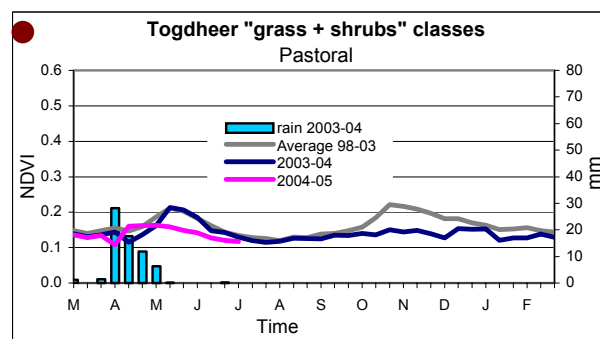
## Highlights

### Pastures

The dryness of the northern and central pastoral areas has not improved so far during the *Gu* season.

Legend: Food crop situation:

Very bad; Bad; Near Normal; Good; Very Good



MARS-Food provides regular 10-daily updates on the progress of the 2004 crop seasons. This bulletin is available also through the "Crop and Rangeland Monitoring Network for the Greater Horn of Africa": <http://marsunit.jrc.it/Africa/>

All MARS-Food crop monitoring products are also accessible through the "Risk & Vulnerability" section of the JRC Digital Map Archive: <http://dma.jrc.it>

Comments and remarks for improvement of this bulletin are welcome.

© European Communities 2004

**Disclaimer:** The geographic borders are purely a graphical representation and are only intended to be indicative. These boundaries do not necessarily reflect the official EC position.

**Legal Notice:** Neither the European Commission nor any person acting on behalf of the commission is responsible for the use, which might be made of the following information.

**Acknowledgements** are due to the following organisations: ALTERRA, FAO, FMA, METEOCONSULT, VITO and projects: AFRICOVER, FSAU.