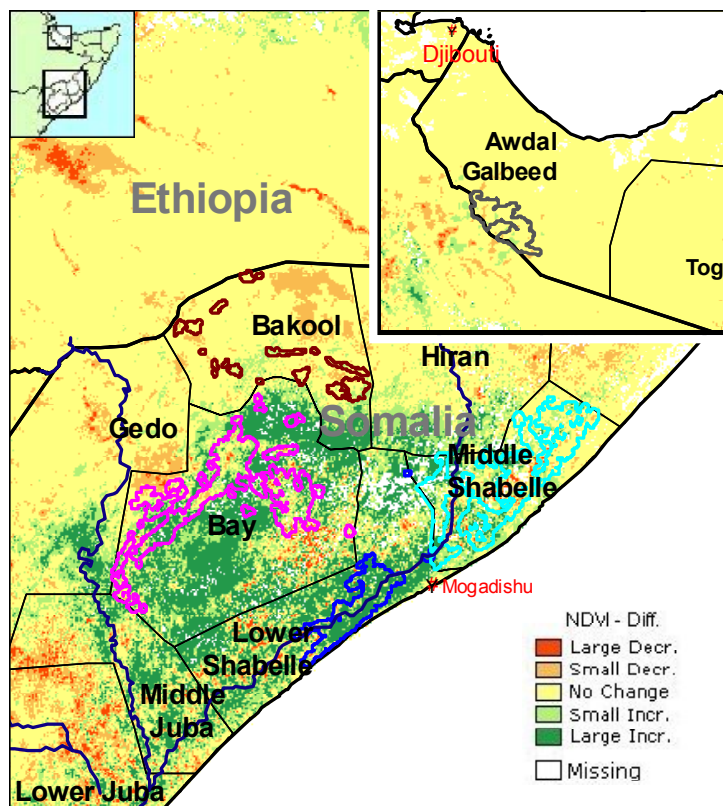
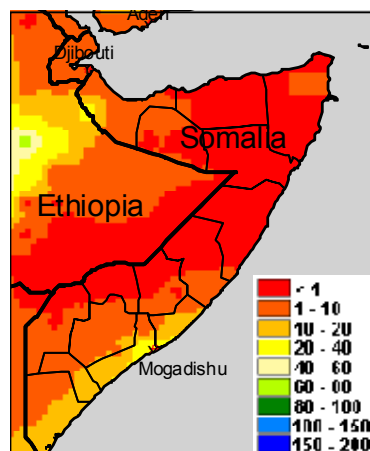


Agricultural areas



Normalized Difference Vegetation Index (NDVI)
Absolute difference w.r.t. previous year (Act. - Prev.)
Period: July 2004 Dekad: II



10-day cumulated rainfall
Period: July 2004 Dekad: II
Data derived from ECMWF model
Produced by METEOCONSULT

Highlights

Rainfall

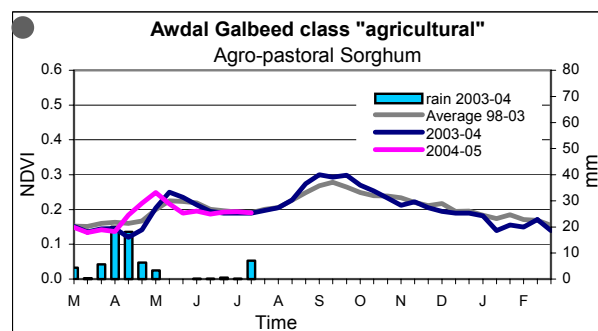
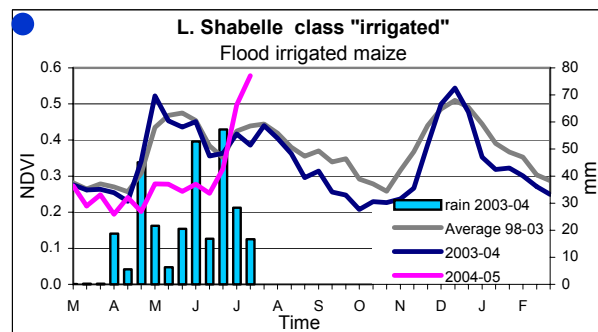
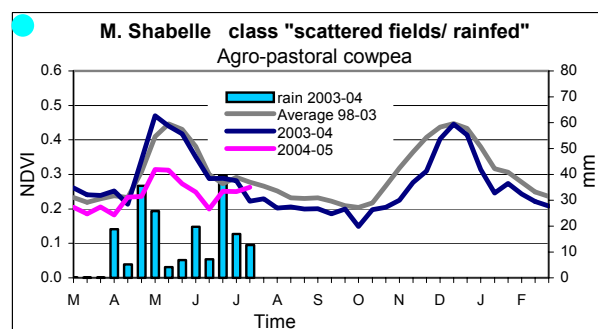
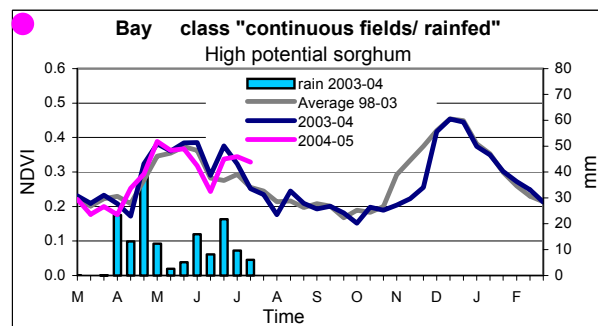
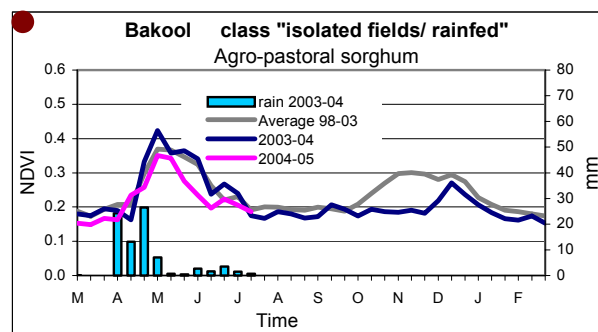
Some rainfall is visible over the southern regions of the country while the situation in the northern pastoral areas remains dry.

Crops

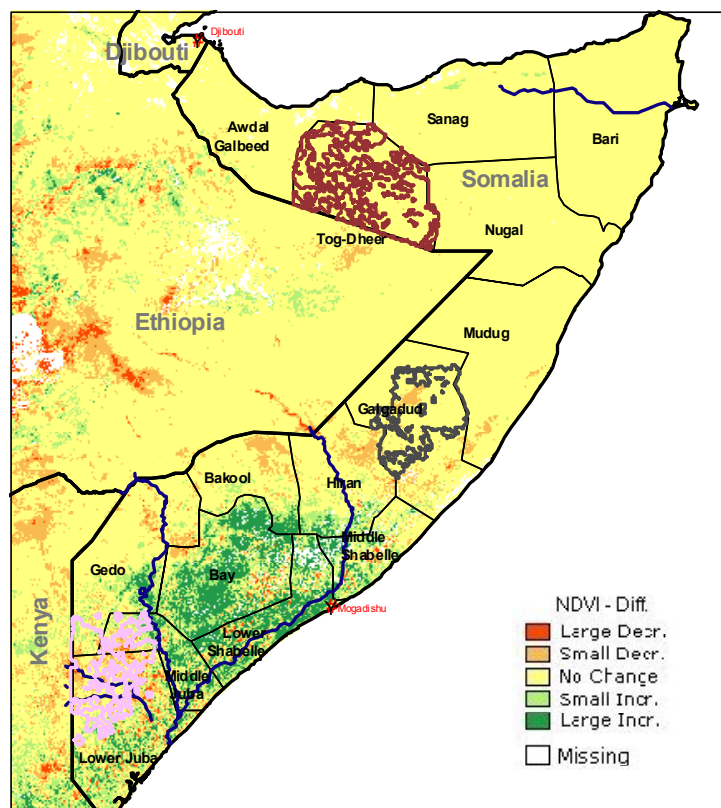
With the exception of Bay, the effects of short and insufficient Gu rains are clearly visible. Following the late rains vegetation is very green in Southern Somalia and in particular in Lower Shabelle. Based on VGT NDVI and agricultural statistics obtained by FSAU, a Gu production forecast for Bay and Lower Shabelle was made as follows:

Bay (sorghum):
41060 MT +/- 17607 MT
Lower Shabelle (maize):
49905 MT +/- 7845 MT

A technical description of the Gu production forecast can be found here:
<http://mars.jrc.it/bulletin/Somalia/2004/>



Pastoral areas



Normalized Difference Vegetation Index (NDVI)
Absolute difference w.r.t. previous year (Act. – Prev.)
Period: July 2004 Dekad: II

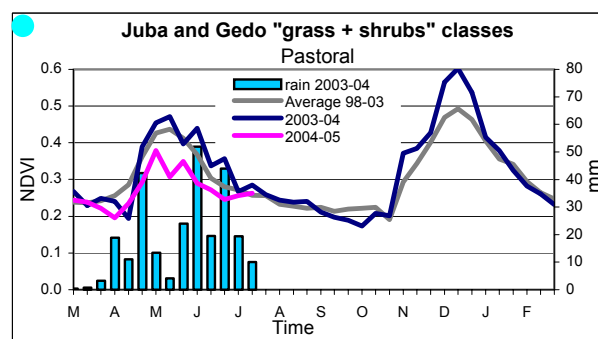
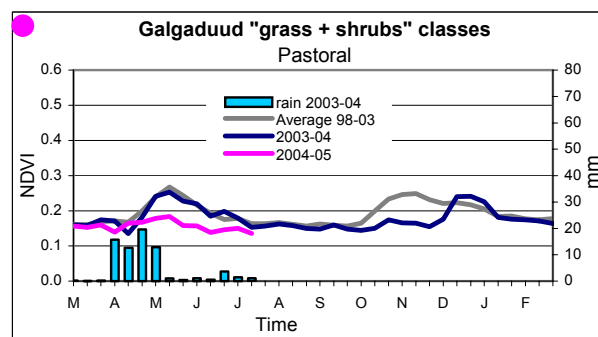
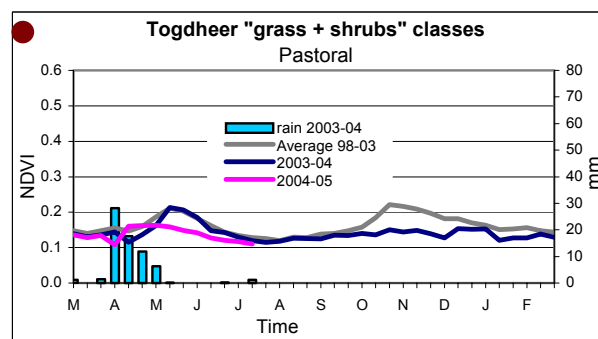
Highlights

Pastures

The dryness of the northern and central pastoral areas has not improved so far during the *Gu* season.

Legend: Food crop situation:

Very bad; Bad; Near Normal; Good; Very Good



MARS-Food provides regular 10-daily updates on the progress of the 2004 crop seasons. This bulletin is available also through the "Crop and Rangeland Monitoring Network for the Greater Horn of Africa": <http://marsunit.jrc.it/Africa/>

All MARS-Food crop monitoring products are also accessible through the "Risk & Vulnerability" section of the JRC Digital Map Archive: <http://dma.jrc.it>

Comments and remarks for improvement of this bulletin are welcome.

© European Communities 2004

Disclaimer: The geographic borders are purely a graphical representation and are only intended to be indicative. These boundaries do not necessarily reflect the official EC position.

Legal Notice: Neither the European Commission nor any person acting on behalf of the commission is responsible for the use, which might be made of the following information.

Acknowledgements are due to the following organisations: ALTERRA, FAO, FMA, METEOCONSULT, VITO and projects: AFRICOVER, FSAU.

Produced by: MARS Unit, IPSC, JRC-EC, TP266, I-21020 Ispra (VA), Italy

Contact: Jacques Delincé, Head of MARS Unit. Fax: +39-0332-789029, E-mail: thierry.negre@jrc.it, felix.rembold@jrc.it, <http://mars.jrc.it/food>

Download address: <http://mars.jrc.it/bulletin/somalia>