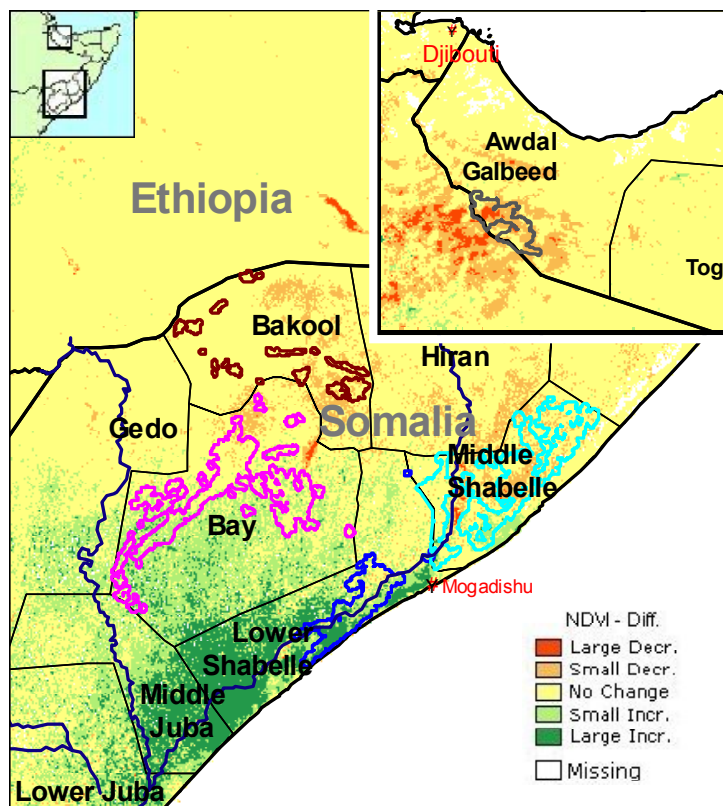


Agricultural areas



Normalized Difference Vegetation Index (NDVI)
Absolute difference w.r.t. previous year (Act. - Prev.)
Period: September 2004 Dekad: III

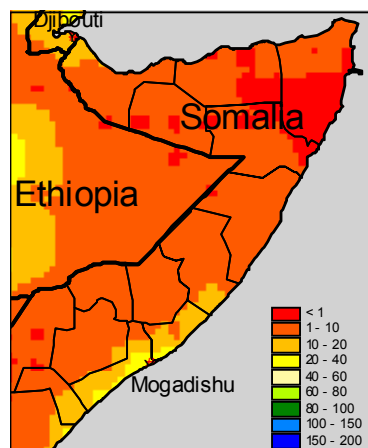
Highlights

Rainfall

The ECMWF model shows some low rainfall in many areas of the country with peaks of 20-40 mm in the Southern coastal regions. No rain occurred in the drought affected North East.

Crops

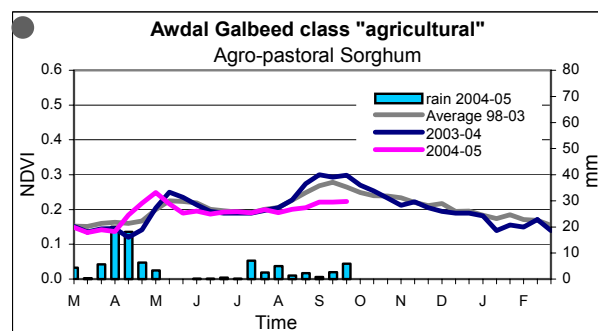
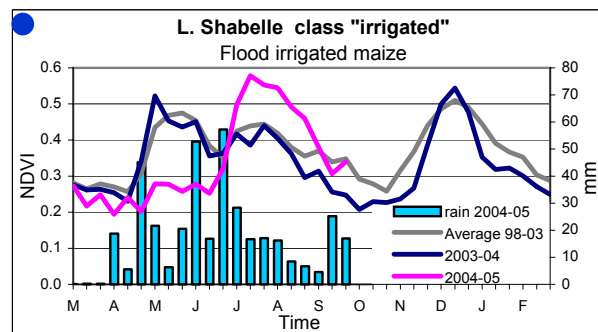
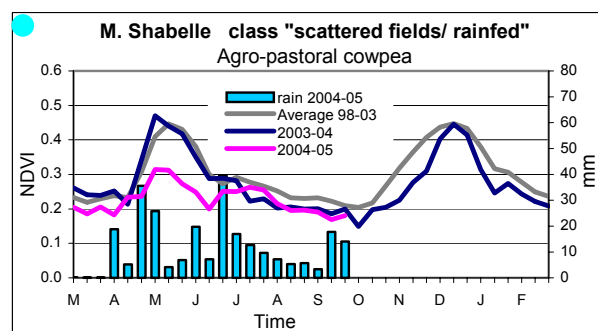
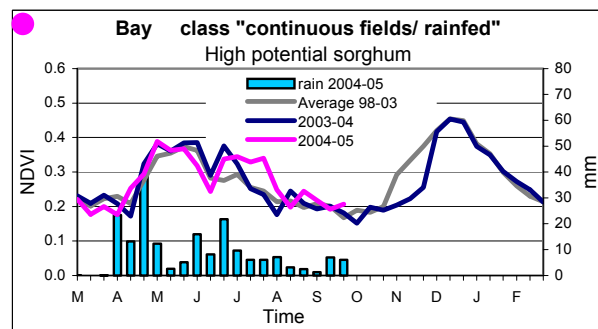
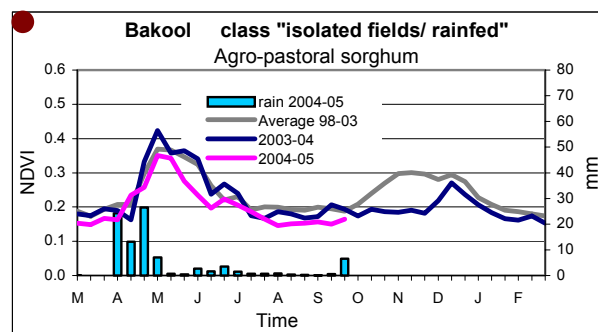
The greenness of agricultural vegetation is generally low due to the dry season. The *Gu* crop cycle in *Lower Shabelle* shows a clear temporal shift due to the late rain this year. In *Awdal Galbeed* the second crop season is significantly delayed by the scarce rainfall received so far by this region.



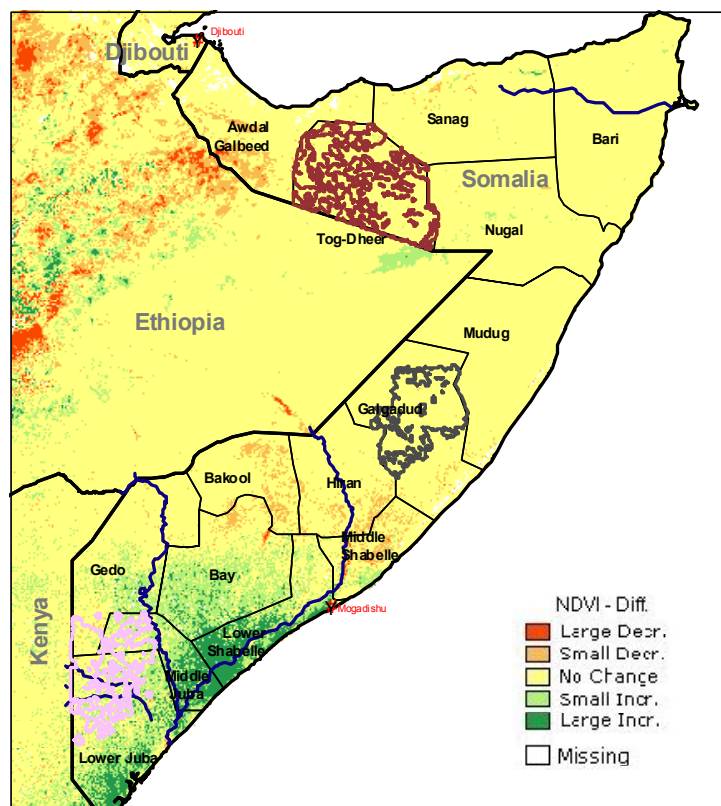
10-day cumulated rainfall
Period: September 2004 Dekad: III
Data derived from ECMWF model
Produced by METEOCONSULT

A technical description of the *Gu* production forecast can be found here:
<http://mars.jrc.it/bulletin/Somalia/2004/>

Legend: Food crop situation:
Very bad; Bad; Near Normal; Good; Very Good



Pastoral areas








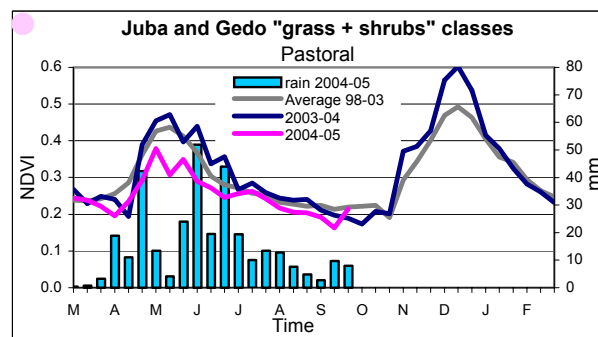
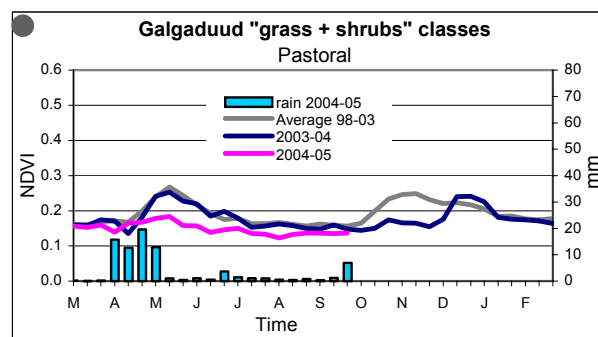
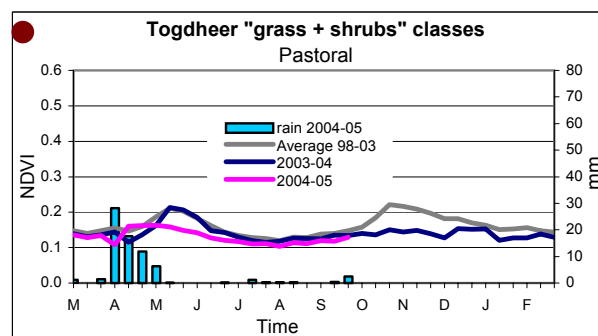
Normalized Difference Vegetation Index (NDVI)
 Absolute difference w.r.t. previous year (Act. – Prev.)
 Period: September 2004 Dekad: III

Highlights

Pastures

The conditions for pastoral livelihoods remain extremely critical in the Northern and Central parts of the country. Good rainfall is needed to alleviate the effects of long term drought.

Legend: Food crop situation:
 Very bad;  Bad;  Near Normal;  Good;  Very Good



MARS-Food provides regular 10-daily updates on the progress of the 2004 crop seasons. This bulletin is available also through the "Crop and Rangeland Monitoring Network for the Greater Horn of Africa": <http://marsunit.jrc.it/Africa/>

All MARS-Food crop monitoring products are also accessible through the "Risk & Vulnerability" section of the JRC Digital Map Archive: <http://dma.jrc.it>

Comments and remarks for improvement of this bulletin are welcome.

© European Communities 2004

Disclaimer: The geographic borders are purely a graphical representation and are only intended to be indicative. These boundaries do not necessarily reflect the official EC position.

Legal Notice: Neither the European Commission nor any person acting on behalf of the commission is responsible for the use, which might be made of the following information.

Acknowledgements are due to the following organisations: ALTERRA, FAO, FMA, METEOCONSULT, VITO and projects: AFRICOVER, FSAU.

Produced by: MARS Unit, IPSC, JRC-EC, TP266, I-21020 Ispra (VA), Italy

Contact: Jacques Delincé, Head of MARS Unit. Fax: +39-0332-789029, E-mail: thierry.negre@jrc.it, felix.rembold@jrc.it, <http://mars.jrc.it/food>

Download address: <http://mars.jrc.it/bulletin/somalia>