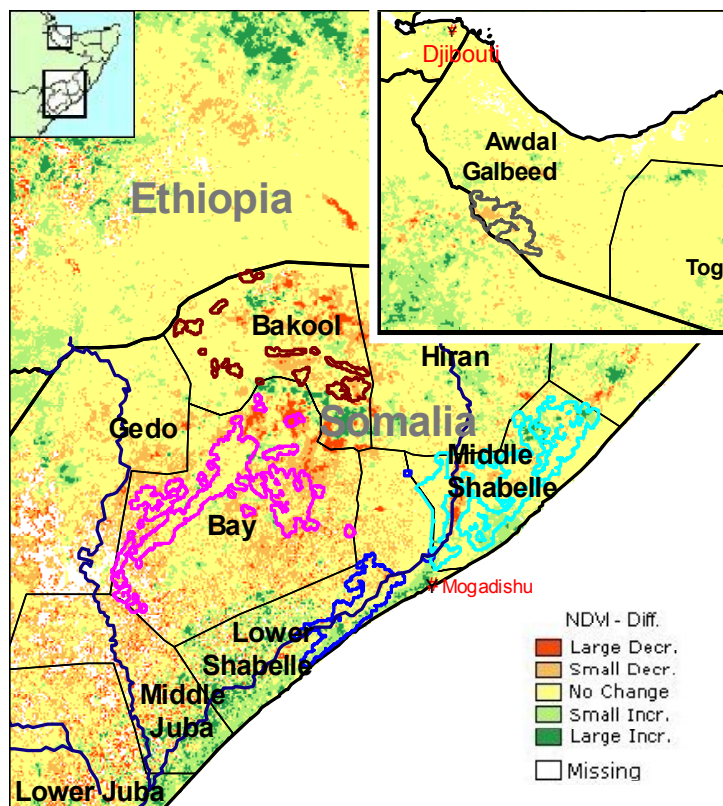


### Agricultural areas



**Normalized Difference Vegetation Index (NDVI)**  
Absolute difference w.r.t. previous year (Act. - Prev.)  
Period: October 2004 Dekad: II

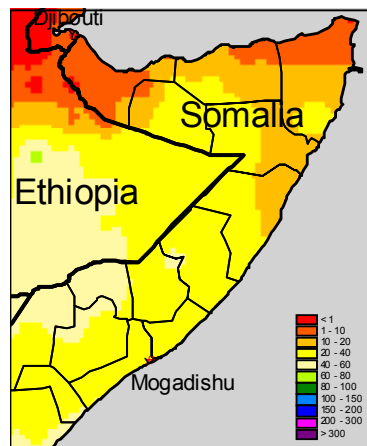
### Highlights

#### Rainfall

Significant rainfall occurred in many areas of the country with peaks of 40-60 mm in the South/West.

#### Crops

The greenness of agricultural vegetation is generally low as expected for this season. Planting of Deyr crops is still not visible yet but probably facilitated by the rain of this dekad. In *Awdal Galbeed* the second crop season appears significantly worse than normal.



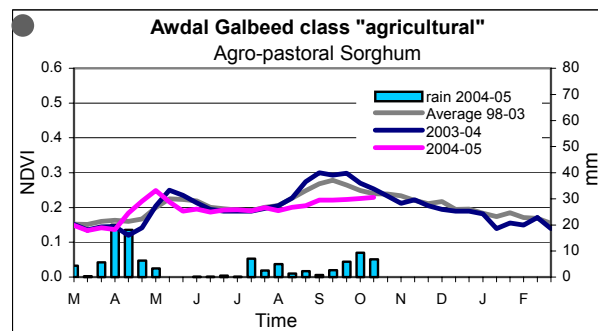
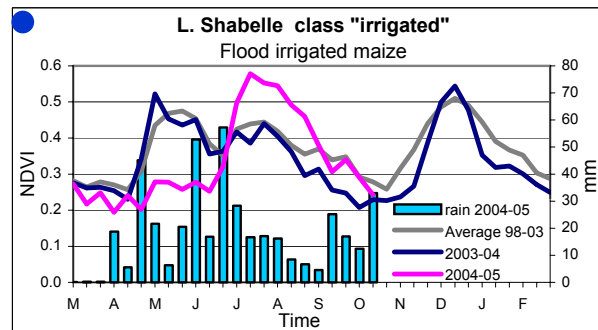
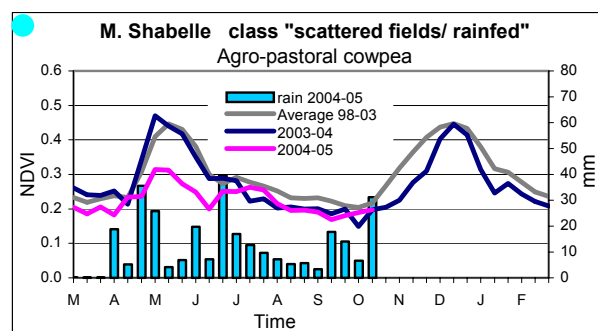
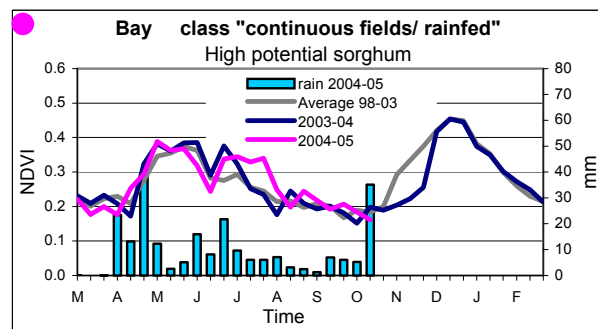
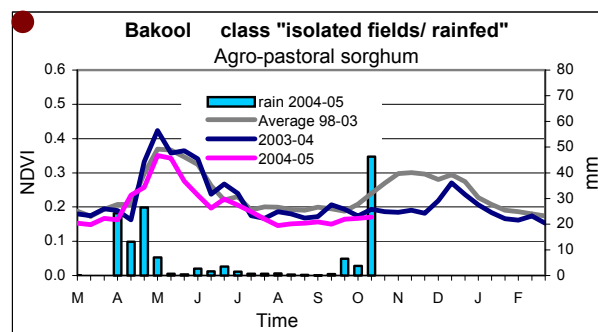
**10-day cumulated rainfall**  
Period: October 2004 Dekad: II  
Data derived from ECMWF model  
Produced by METEOCONSULT

A technical description of the Gu production forecast can be found here:  
<http://mars.jrc.it/bulletin/Somalia/2004/>

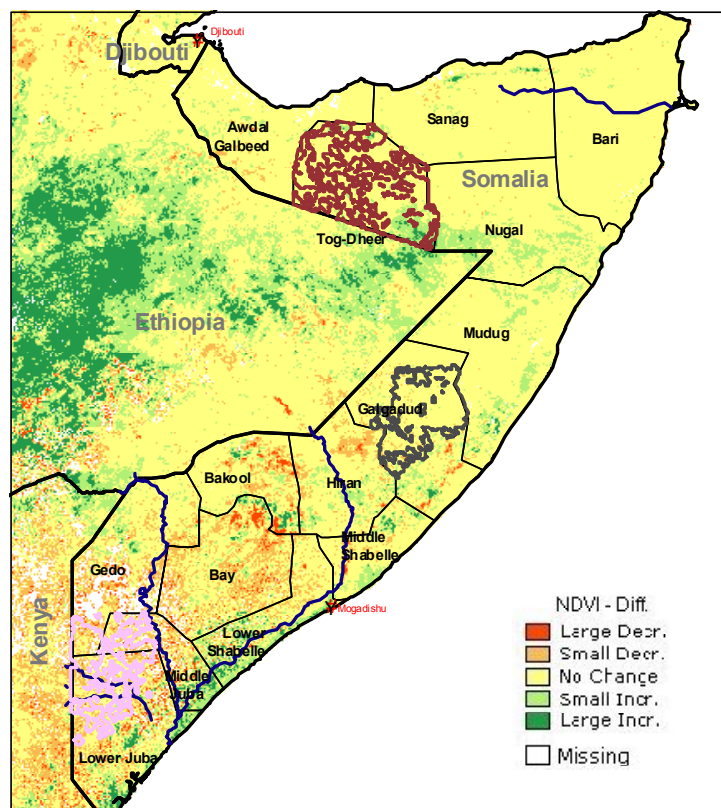
Legend: Food crop situation:  
Very bad; Bad; Near Normal; Good; Very Good

Produced by: MARS Unit, IPSC, JRC-EC, TP266, I-21020 Ispra (VA), Italy

Contact: Jacques Delincé, Head of MARS Unit. Fax: +39-0332-789029, E-mail: [thierry.negre@jrc.it](mailto:thierry.negre@jrc.it), [felix.rembold@jrc.it](mailto:felix.rembold@jrc.it), <http://mars.jrc.it/food>  
Download address: <http://mars.jrc.it/bulletin/somalia>



## Pastoral areas








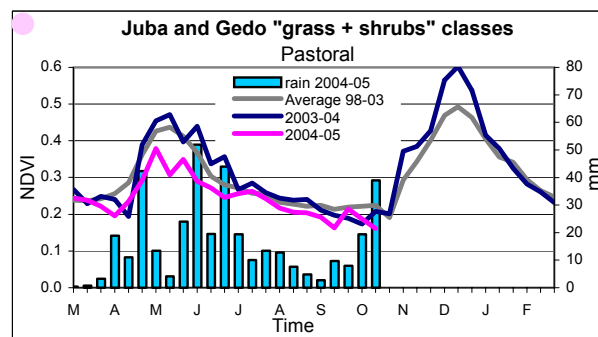
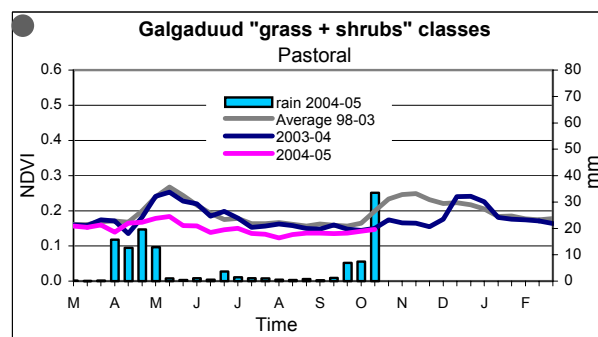
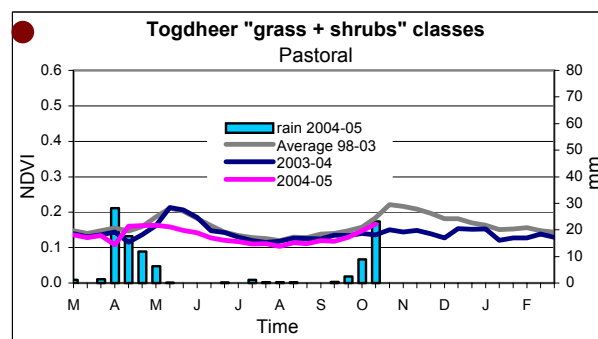
**Normalized Difference Vegetation Index (NDVI)**  
 Absolute difference w.r.t. previous year (Act. – Prev.)  
 Period: October 2004 Dekad: II

## Highlights

### Pastures

The conditions for pastoral livelihoods remain extremely critical in the Northern and central parts of the country. However the rainfall of this dekad could help natural vegetation to recover from the long drought.

Legend: Food crop situation:  
 Very bad;  Bad;  Near Normal;  Good;  Very Good



MARS-Food provides regular 10-daily updates on the progress of the 2004 crop seasons. This bulletin is available also through the "Crop and Rangeland Monitoring Network for the Greater Horn of Africa": <http://marsunit.jrc.it/Africa/>

All MARS-Food crop monitoring products are also accessible through the "Risk & Vulnerability" section of the JRC Digital Map Archive: <http://dma.jrc.it>

Comments and remarks for improvement of this bulletin are welcome.

© European Communities 2004

**Disclaimer:** The geographic borders are purely a graphical representation and are only intended to be indicative. These boundaries do not necessarily reflect the official EC position.

**Legal Notice:** Neither the European Commission nor any person acting on behalf of the commission is responsible for the use, which might be made of the following information.

**Acknowledgements** are due to the following organisations: ALTERRA, FAO, FMA, METEOCONSULT, VITO and projects: AFRICOVER, FSAU.

**Produced by:** MARS Unit, IPSC, JRC-EC, TP266, I-21020 Ispra (VA), Italy

**Contact:** Jacques Delincé, Head of MARS Unit. Fax: +39-0332-789029, E-mail: [thierry.negre@jrc.it](mailto:thierry.negre@jrc.it), [felix.rembold@jrc.it](mailto:felix.rembold@jrc.it), <http://mars.jrc.it/food>

**Download address:** <http://mars.jrc.it/bulletin/somalia>