



**KENYA METEOROLOGICAL SERVICE
DEKADAL AGROMETEOROLOGICAL BULLETIN**

**WEATHER AND CROP REVIEW FOR DEKAD 10, 2015
01-10 APRIL, 2015**

1. HIGHLIGHTS ON RAINFALL AND TEMPERATURE

There was generally an increase in Rainfall activities in most stations countrywide, however the highest rainfall reported in this current dekad was lower than the previous dekad. The spatial distribution during the dekad remained the same. The highest rainfall amount of 124.0mm was received at Kitale station in Rift Valley region. The second highest rainfall amount of 122.8mm was recorded at Meru station in Eastern region. Nyanza region reported the highest rainfall amount of 121.9mm at Kisii station. Dagoretti station in Nairobi region recorded the highest rainfall amount of 100.7mm. North Eastern region reported the highest rainfall amount of 87.9mm at Lodwar station. In central region, Nyahururu station recorded the highest rainfall amount of 61.8mm. Kakamega station in Western region received the highest rainfall amount of 57.5mm. Coastal region reported the highest rainfall amount of 44.2mm at Voi station.

Maximum and minimum temperatures continued to decrease and increase respectively. North-eastern region continued to record the highest maximum temperature of 35.4°C at Lodwar station compared to 36.6°C at the same station in the previous dekad. The lowest Minimum temperature of 9.9°C was recorded at Nyahururu station in central region compared to 8.8°C reported in the same station in the previous dekad.

For a more comprehensive summary of rainfall and other meteorological parameters, see Figures 3.1 to 3.4 as shown below.

2. CROP AND WEATHER REVIEW FOR DEKAD 10: 01- 10 APRIL, 2015

2.1 NYANZA AND WESTERN REGIONS

2.1.1 Kakamega

The station received rainfall amount of 57.5mm during the dekad. The mean air temperature was 21.7°C. There was no report on sunshine duration and pan evaporation.

Maize and beans were at emergence.

2.1.2 Kisii

The station reported rainfall amount of 121.9mm. The mean air temperature recorded was 20.0°C. There was no record on pan evaporation and sunshine parameter.

Maize and beans are in emergence stage and in fair state.

2.2 RIFT VALLEY REGION

2.2.1 Kitale

The station reported rainfall amount of 124.0mm. The mean air temperature recorded was 20.6°C. There was no report on pan evaporation and sunshine duration.

No phenological report.

2.2.2 Eldoret-Kapsoya

The station received rainfall amount of 86.9mm. The mean air temperature and pan evaporation recorded were 19.7°C and 4.9mm respectively. There was no record on sunshine duration.

No phenological report.

2.3 CENTRAL KENYA HIGHLANDS AND NAIROBI AREA REGION

2.3.1 Nyeri

The station received rainfall amount of 24.9mm. The average air temperature was 19.8°C. There was no report on pan evaporation and sunshine parameters.

Both Maize and beans were at emergence stage and in fair state.

2.3.2 Kabete

The station received rainfall amount of 99.9mm. There was no report on the mean air temperature, pan evaporation and sunshine duration.

Planting is still going on.

2.3.3 Thika

The station recorded rainfall amount of 0.6mm. The mean air temperature and pan evaporation recorded were 18.9°C and 2.4mm respectively. There was no report on sunshine duration.

Maize, beans and potatoes were all at emergence stage and in fair state.

2.3.4 Nyahururu

The station reported rainfall amount of 61.8mm. The mean air temperature recorded was 17.1°C. There was no report on pan evaporation and sunshine duration.

Land preparations and planting is going on in some farms.

2.3.5. Dagoretti

The station reported rainfall amount of 100.7mm. The pan evaporation recorded was 5.5mm. There was no report on mean air temperature, pan evaporation and sunshine duration.

Land preparation and planting was done during the dekad.

2.4 EASTERN KENYA REGION

2.4.1 Embu

The station received rainfall amount of 87.7mm. The pan evaporation recorded was 5.5mm. There was no report on mean air temperature and sunshine parameters.

Maize and beans were both at emergence stage and in fair state as weeding is going on.

2.4.2 Meru

The station received rainfall amount of 122.8mm. The mean air temperature and pan evaporation recorded were 20.2°C and 4.7mm respectively. There was no report on sunshine duration.

Both maize and beans were at emergence stage and in fair state.

2.4.3 Katumani (Machakos)

The station reported rainfall amount of 39.7mm. The average air temperature and pan evaporation were 21.6°C and 5.3mm respectively. There was no report on Sunshine duration.

Maize and beans were at emergence stage as planting is still going on in some farms.

2.5. COASTAL REGION

2.5.1 Msabaha

The station received rainfall amount of 4.1mm. The average air temperature and pan evaporation recorded were 29.6°C and 6.5mm respectively. There was no report on sunshine duration.

Mangoes were at 100% fruit setting stage and in good state. Most farmers are through with planting their farms.

2.5.2 Mtwapa

The station received rainfall amount of 9.4mm. The average air temperature and pan evaporation recorded were 28.4°C and 6.4mm respectively. There was no report on Sunshine duration.

Mangoes were at flowering stage and in fair state. Some farmers are still preparing their land.

3.0 ANALYSIS OF RAINFALL AND TEMPERATURE CONDITIONS.

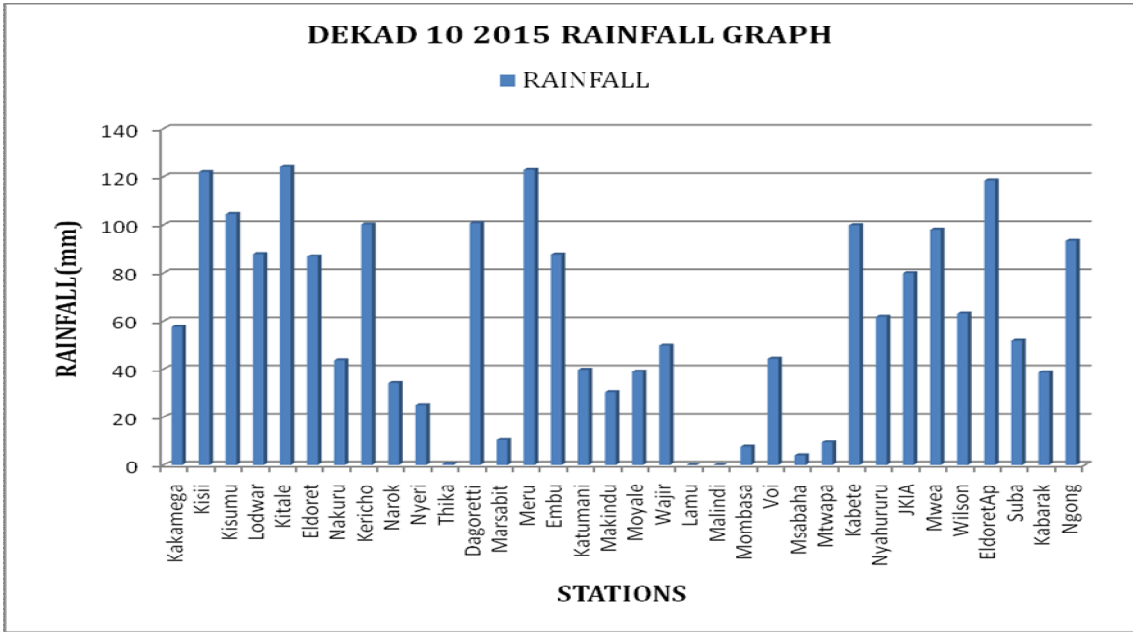


Figure 3.1: Dekadal rainfall totals for 01 – 10 APRIL 2015

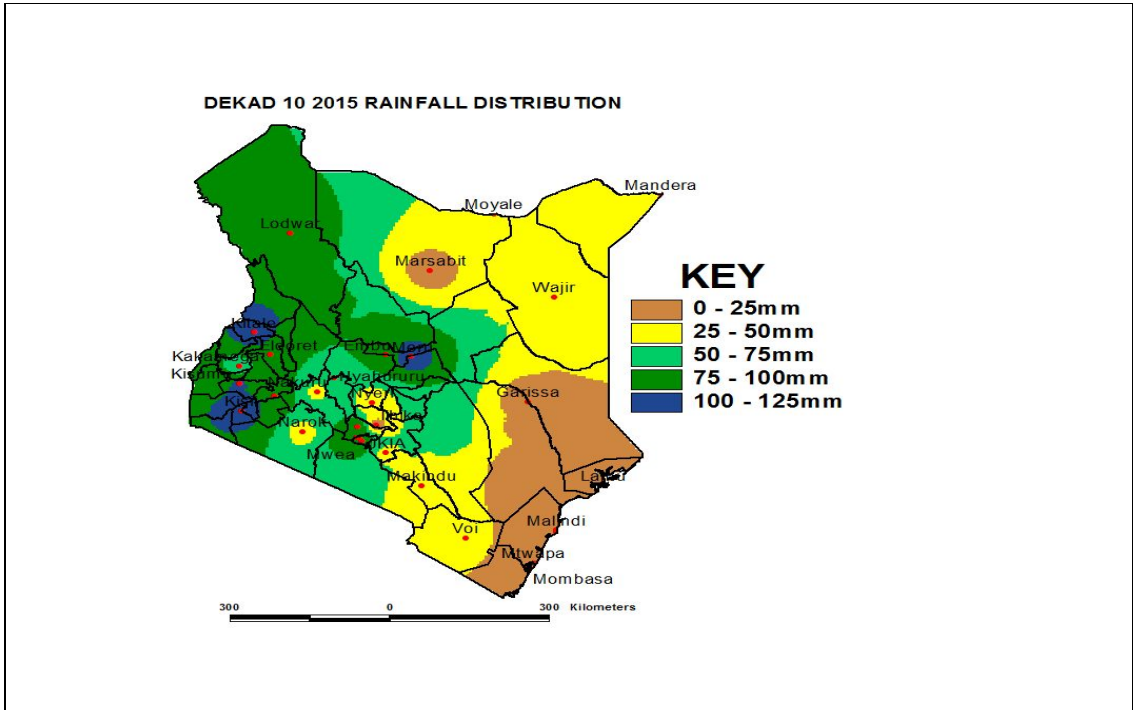


Figure 3.2: Dekadal rainfall distribution for dekad 10, 2015

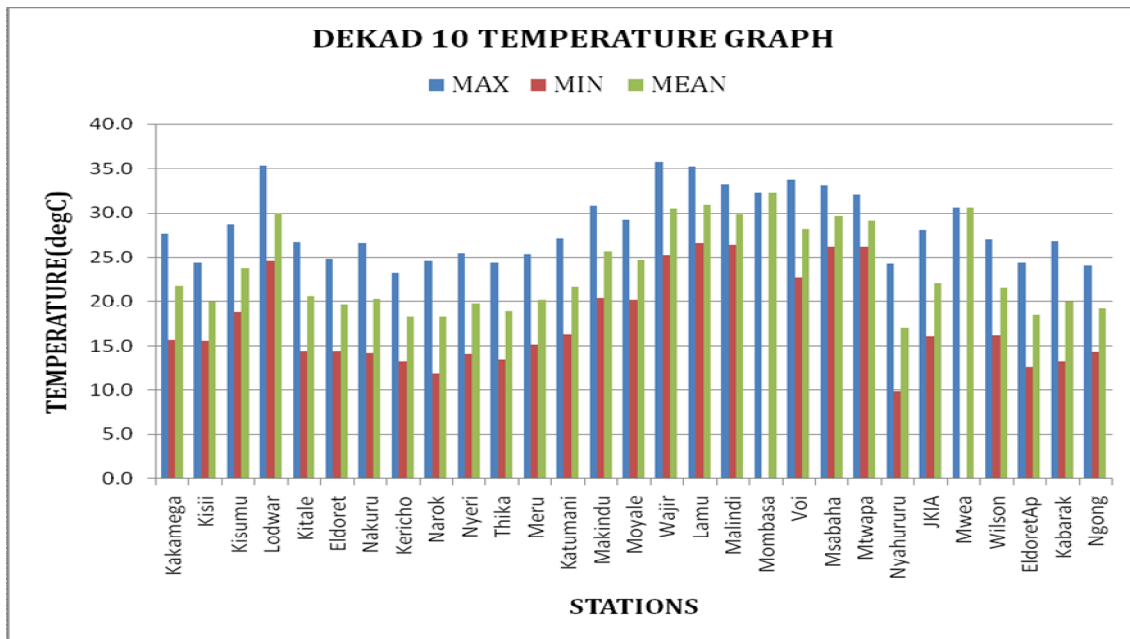


Figure 3.3: Maximum, Minimum and Average temperature for dekad 10 2015

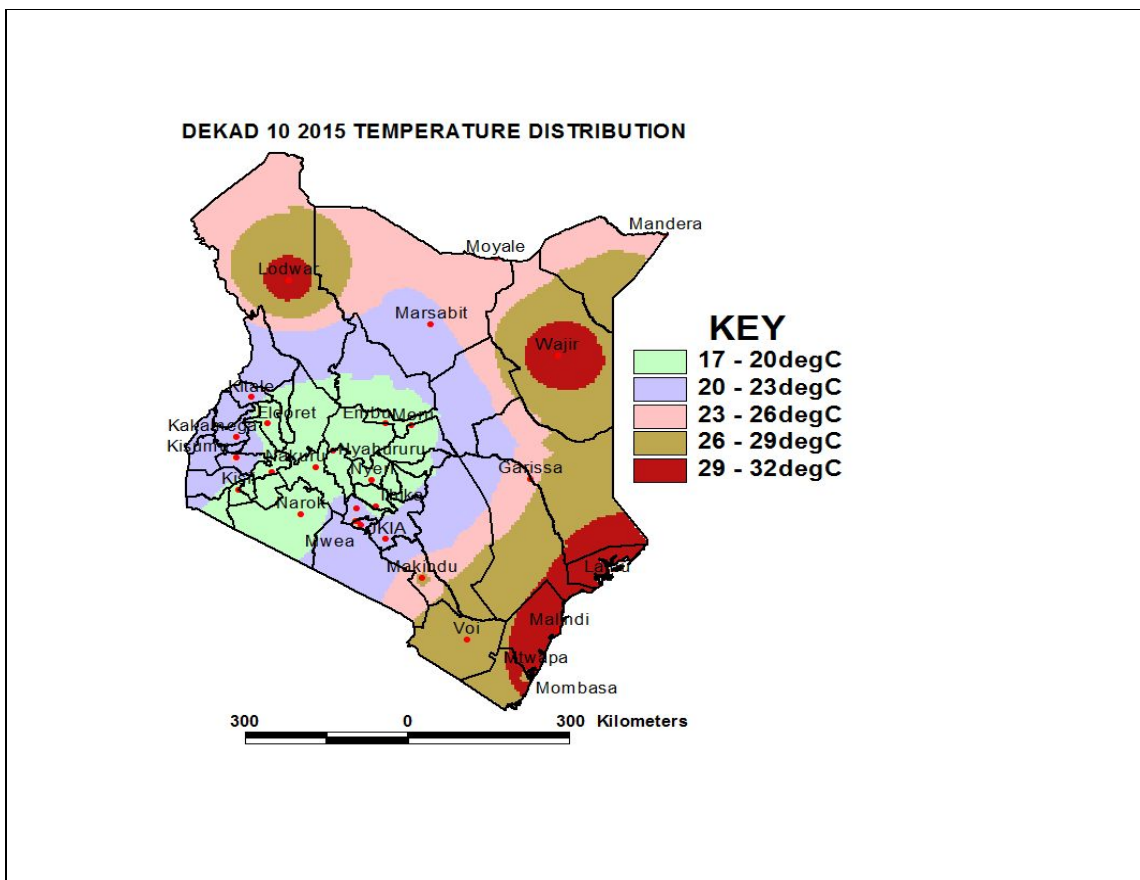


Figure 3.4: Mean temperature distribution for dekad 10 2015

4. EXPECTED WEATHER AND CROP CONDITIONS DURING THE NEXT 10 DAYS; 11-20 APRIL, 2015.

- ❖ **Counties within the Lake Victoria Basin, Highlands west of the Rift Valley, Nyamira, Kericho, Bomet, Uasin-Gishu, Nakuru, Narok, Trans Nzoia, Elgeyo Marakwet, Nandi, Laikipia, Kajiado, Vihiga and Busia),** are expected to experience sunny intervals in the morning with occasional rains over few places in the second half of the entire forecast period. Afternoon/evening showers and thunderstorms over few places are expected on the first two days increasing to several places thereafter.

The rains and showers will be of great beneficial to the crops, which are mostly in emergence stage in places like Kisii. They will also replenish the soil with moisture which will impact positively on the growth of pasture and vegetation that supports livestock keeping in this region.

- ❖ **The Northwestern counties (Turkana, West Pokot and Samburu),** are expected to experience sunny intervals on the first two mornings and rains thereafter. Afternoon/evening showers and thunderstorms are expected over few places on the first two days increasing to several places thereafter.

The rains and showers will be advantageous to the growth of pasture and vegetation hence support the livestock kept in these regions.

- ❖ **The Central highlands including Nairobi area (counties of Meru, Murang'a, Kiambu, Nyeri, Nairobi, Embu, Nyandarua, Tharaka and Kirinyaga),** are expected to experience cloudy early mornings with rains over few places giving way to sunny intervals. Afternoon/evening showers are expected over few places throughout the forecast period.

The rains and showers will benefit the crops that are in their emergence stage in places like Meru, Thika and Embu.

- ❖ **Northeastern counties (counties of Marsabit, Mandera, Wajir, Garissa and Isiolo),** are expected to experience morning rains over few places at the beginning of the forecast period improving to several places from the second day onwards. Afternoon/evening showers are expected from the second day to the end of the forecast period.

The rains and showers will continue to replenish the growth of pasture and vegetation that sustain livestock keeping in this region.

- ❖ **Southeastern lowlands (counties of Taita Taveta, Makueni, Machakos and Kitui),** are expected to experience sunny intervals in the morning throughout the forecast period. Afternoon/evening showers are expected over few places throughout the forecast period.

The afternoon showers will continue replenishing the soil with moisture that will enhance the pasture and vegetation growth for livestock rearing in this region.

- ❖ **In the Coastal strip (counties of Mombasa, Malindi, Kilifi, Lamu, Kwale, etc),** are expected to experience morning showers over few places giving way to sunny intervals in the afternoon throughout the forecast period.

The morning showers will continue benefiting the development of mangoes that are in the flowering and 100% fruit setting stages in places like Mtwapa and Msabaha respectively.

For feedback or further guidance, Contact:

Director,
Kenya Meteorological Services,
Agro meteorological Advisory Services Division,
Dagoretti Corner, Ngong Road, P.O. Box 30259, 00100 GPO, Nairobi
Tel: +254 (0)20 3867880-7/3876957/3873682; Fax: +254 (0)20 3876955
E-mail: agromet@meteo.go.ke;
Website: www.meteo.go.ke

©2015 Kenya Meteorological Services.

