



AGROMETEOROLOGICAL UPDATE



REPORTING PERIOD:
11 – 20 NOVEMBER 2016

ISSUE No.: 05

SEASON: 2016/17

RELEASED: 25/11/2016

CONTENTS

HIGHLIGHTS	1
CONTENTS	1
RAINFALL SYNOPSIS AND PROGNOSIS	1
RAINFALL AND TEMPERATURES	2
RAINFALL	2
TEMPERATURES	2
CROP PRODUCTION	3
MAIZE CROP STAGE AND CONDITION .	3
OTHER CROPS	3
CURRENT FARMING ACTIVITY	3
LIVESTOCK AND PASTURES	3
WATER (BULK) AVAILABILITY	3
MEDIUM-TERM OUTLOOK	3
RAINFALL	3
TEMPERATURE	3
SOIL MOISTURE	3
WIND SPEED	3

HIGHLIGHTS

- Average rainfall were received during the dekad...
- Vegetation continues to improve except for some parts in the northern Lowveld....
- Farmers continue to plant, but some are still hesitant....
- Reduced rains are expected in the coming dekad.....
- Warmer than average temperatures expected.....
- Slight improvement in soil moisture expected.....
- Winds are going to be light to moderate breeze

RAINFALL SYNOPSIS AND PROGNOSIS

➤ SYNOPSIS - PAST TEN DAYS

The past ten days recorded about average rainfall due to the continued strengthening of the rain bearing systems migrating from the northern hemisphere summer coupled with coastal lows over southern Africa.

➤ PROGNOSIS - NEXT TEN DAYS

The current systems are expected to continue dominating over our region with a few rainy days and most of the days in the outlook period relatively dry; thus increasing probability of dry spells in some parts of the country.

RAINFALL AND TEMPERATURES

RAINFALL

About average (Figure 1 below) rainfall were recorded in most stations in the country with an exception of areas in the northern Lowveld (Map 1 below), where below average rainfall persist.

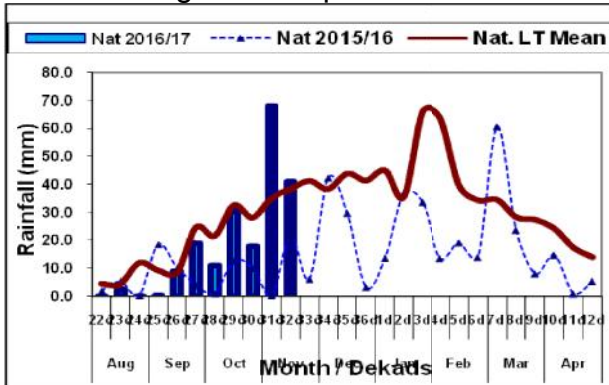
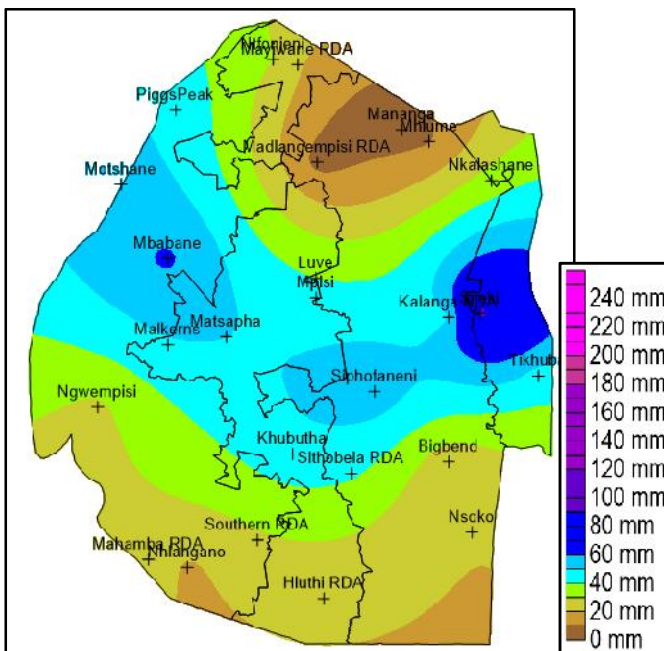


Figure 1: Rainfall distribution as second dekad of November 2016



Map 2: Spatial rainfall distribution for second dekad November 2016

The region distribution of the rainfall shows (Table 1) that two of the agro-

ecological regions received above longterm average rainfall and that of last season (2015/16 season), while the other two received below average.

Table 1: Rainfall (mm) for 2nd dekad November 2016

	HV	MV	LV	LP
2015/16	25	14	29	19
Average	52	35	30	36
2016/17	30	41	24	70
Anomaly	-22	5	-6	34

TEMPERATURES

Some stations in the Highveld and Middleveld recorded below average maximum temperatures (Figure 2) and mostly below average minimum temperatures (Figure 3).

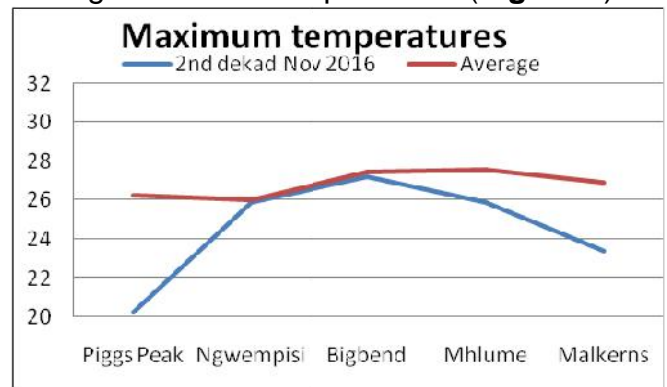


Figure 2: Maximum Temperatures (°C) for 2nd Dekad November 2016

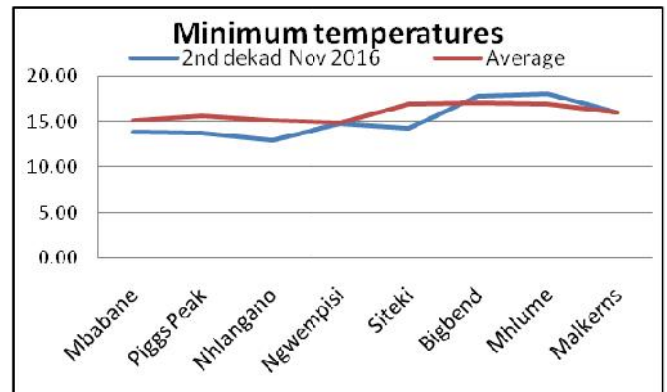


Figure 3: Minimum Temperatures (°C) for 2nd Dekad November 2016

CROP PRODUCTION

MAIZE CROP STAGE AND CONDITION

Some maize farmers who planted much earlier have their at late vegetative stage and in a good condition (Picture 1). But most farmers have their maize crop at emergence to early vegetative stages.



Picture 1: Maize at mid vegetative stage at Lukhetseni in Lubombo Plateau

OTHER CROPS

Some dry bean crops were found planted at Tikhuba RDA in the Lubombo region and in a good condition

CURRENT FARMING ACTIVITY

Most farmers are still busy with land preparation and planting whilst those who planted early are already weeding



Picture 2: Subsistence farmers weeding their maize crop at Tikhuba area in the Lubombo Plateau

LIVESTOCK AND PASTURES

Cattle continue to show signs of improving in most parts of the country. Pastures are also showing signs of regeneration especially in the Lowveld. Satellite images show a significant improvement in most parts except the northeastern parts of the Lowveld where rains have not been good so far.

WATER (BULK) AVAILABILITY

Most major rivers have since improved in the country, but the flow levels are still low but better than during the drought period. Water levels are also slowly improving in three of the major dams monitored by the Department of Water Affairs' Hydrology Division.

MEDIUM-TERM OUTLOOK

RAINFALL

It is expected that reduced rainfall amounts with dry spells will be recorded in the next ten days.

TEMPERATURE

Hot temperatures are expected in the eastern parts of the country, with warm temperatures over the western half.

SOIL MOISTURE

Reduced soil moisture is expected in the outlook period.

WIND SPEED

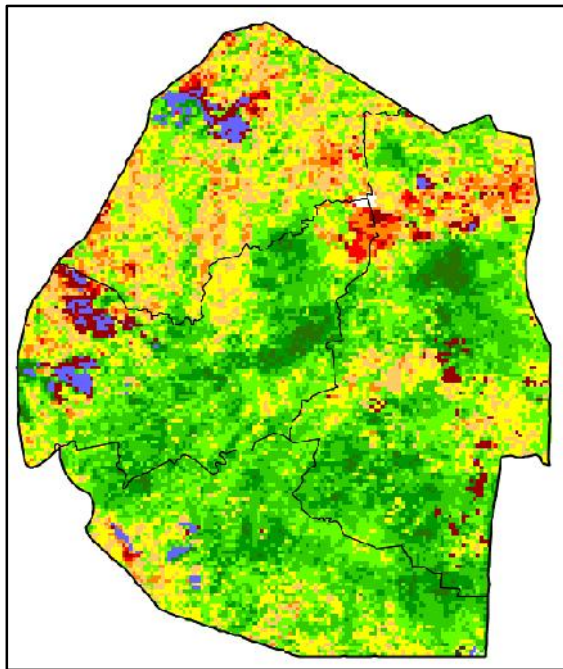
Light to moderate wind speeds are predicted during the outlook period.

Compiled and Issued by: Agrometeorological Unit,

Swaziland Meteorological Service, Ministry of Tourism and Environmental Affairs.

Box 2652, Mbabane, Swaziland. ☎ (+268) 2404 8859 / 2404 6274. Fax: 2404 1530

E-mail: dudu@swazimet.gov.sz



Legend

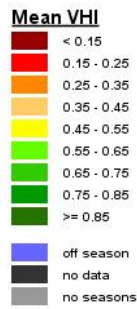
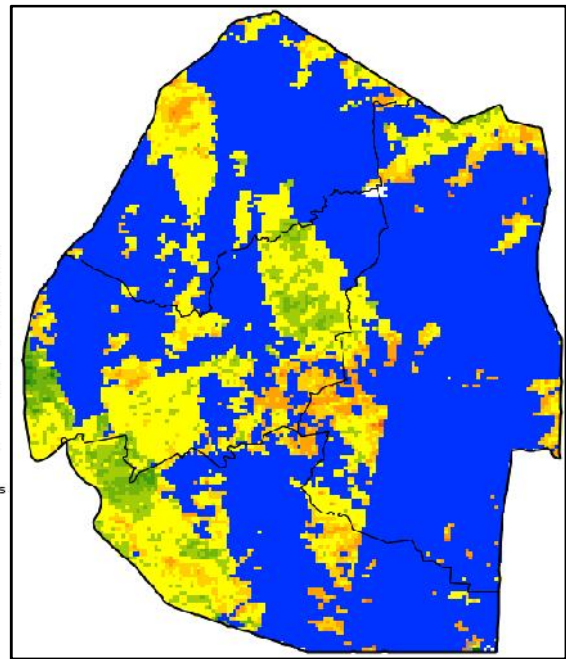


Image 1: Mean Vegetation Health Index image (2nd Dekad November 2016) Source: FAO-GIEWS



Legend

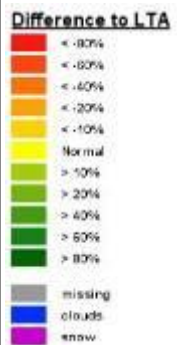


Image 2: Vegetation anomaly image (2nd Dekad November 2016) Source: FAO-GIEWS

CONTRIBUTORS, PARTNERS AND SOURCES OF INFORMATION

Please Note: This bulletin is issued in support of the efforts by the National Early Warning Office (NEWU) for food Security in the Ministry of Agriculture to provide Swaziland's current agronomic and meteorological developments to users, stakeholders, government authorities and international organizations during the farming season.

The NEWS is currently made-up of a core team of the National Early Warning Unit (NEWU) of Ministry of Agriculture, the Agromet Unit of the National Meteorology Department and the Agricultural Statistics Unit of Central Statistics Office (CSO).